

LH 80 cm Antenne - Alu

1. Spezifikationen:

Modell	80LH
Typ	Offset
Diameter (mm)	730 x 800
Fokusentfernung (mm)	530
F/D Ratio	0.64
Leistungsfähigkeit (%)	> 70
Material	Aluminium
Materialstärke	1.0
Offset Winkel	26°
Gewinn @ 10,7 GHz	36
Gewinn @ 11,7 GHz	37.5
Gewinn @ 12,7 GHz	38.1
Elevation	Min – 22 °
	Max – 78 °
Azimuth	360 °

Erhältlich in den Farben Lichtgrau, Anthrazit oder Rot.

2. Abbildungen

2.1 Vorderansicht



2.2 Seitenansicht










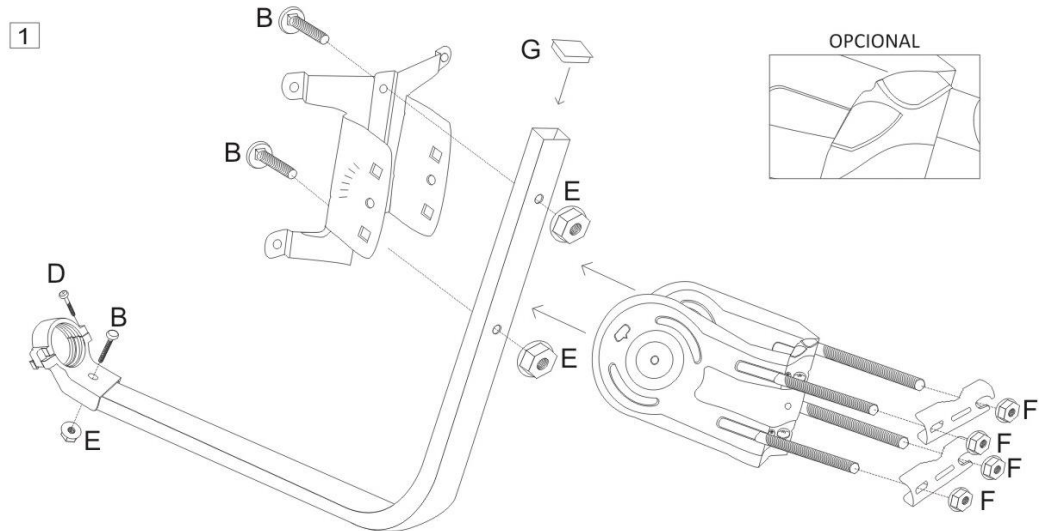
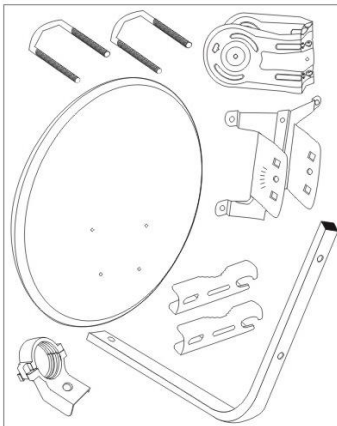
2.3 Rückansicht



3. Montageanleitung (1/2)

A/F080LH | A/F085LH | A/F100LH

A		M8 x 16 Oval head, short neck	4
B		M6 x 30 Oval head, short neck	3
C		M6 x 12 Combi	4
D		M4 x 18 Combi	1
E		M6 nut	7
F		M8 nut	8
G		30x20 Terminal	1



V021m11

3. Montageanleitung (2/2)

